

### 1 SPECIAL CONDITIONS OF USE

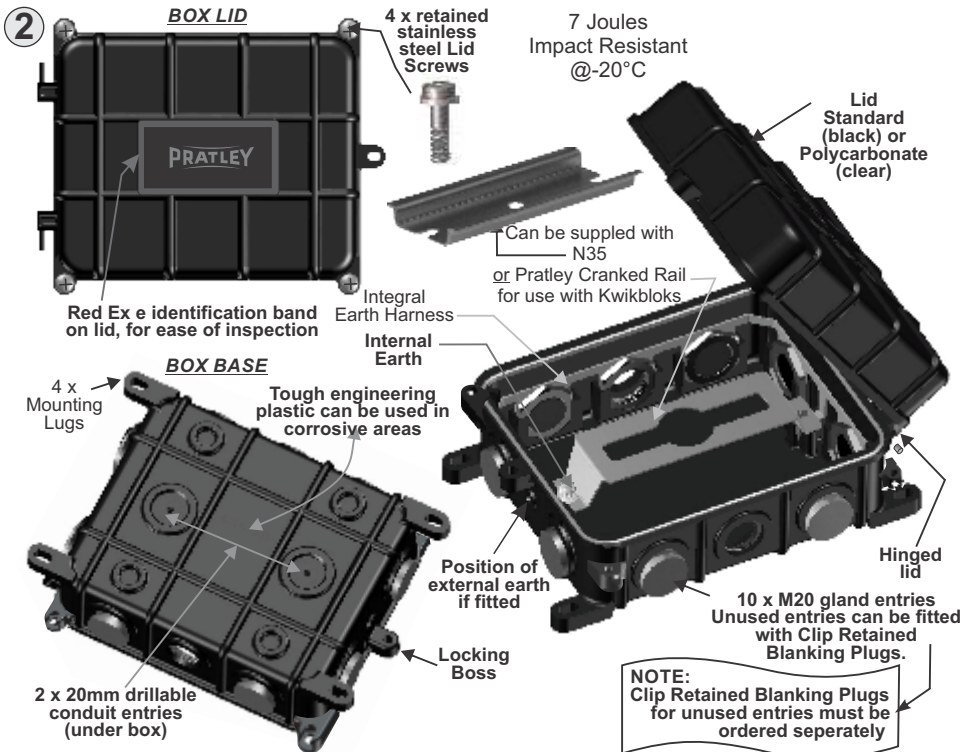
- Junction Box rated for Ambient Temperature Range of -20°C → 40°C
- Installation shall only be carried out by suitably trained personnel in accordance with the code of practice per SANS/IEC 60079-14.
- For Ex e/n applications, use only suitably rated cable glands, plugs and/or adaptors.
- Static hazard, wipe with a damp cloth when cleaning.
- Maximum Dissipated Power not to exceed 7.5W.

#### CERTIFICATION & MARKING

Ex e IIC, T6 Gb  
Ex na IIC, T6 Gb  
Ex tb IIC, T85°C Db  
IP 66/68 (2m cont.)  
Certificate no. PENDING



• SUITABLE FOR USE IN ZONE 1, 2, 21, & 22.



### 3 FITTING OF GLANDS

Fit per gland fitting instruction leaflet.

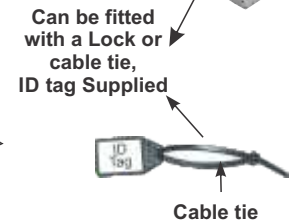
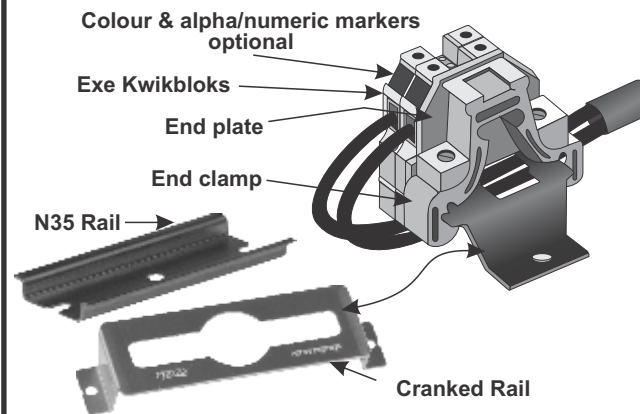
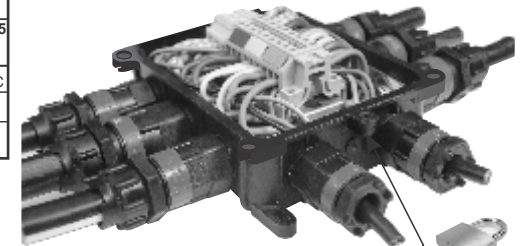
Can be fitted with Pratley Ex e Enviro Glands, Ex e Brass or Ex e Brass Compression Glands.

### 4 CONNECTING METHODS

Box Size No. 1	NUMBER OF KWIKBLOKS PER RECTANGULAR BOX							
	IK 3 750/800V 27 A		IK 5 750/800V 36 A		IK 10 750/800V 67 A		IK 25 750/800V 115 A	
	Ex e IK 3 550V 15 A	Ex e IK 5 550V 21 A	Ex e IK 10 550V 37 A	Ex e IK 25 550V 63 A	Max	Prac	Max	Prac
N35 Rail	22	21	18	17	12	11	10	9
Cranked Rail	20	19	16	15	10	9	8	7

Prac.:= Practical number of Kwikbloks to be fitted

#### Using rail mounted Ex e Kwikbloks



**CONGRATULATIONS!**  
You now have a safe Exe/n rated Junction box.

### 5 CLOSE THE LID AND TIGHTEN SCREWS

### 6 MAINTENANCE / REPAIR

- This product contains no parts which may be repaired.
- Only the lid gasket, lid fasteners and internal terminals/end connectors may be replaced.
- Suitable replacement parts, as stated above, must be purchased from Pratley (see accessories).
- Inspection of termination & condition of lid sealing gasket must only be carried-out by suitably trained personnel in accordance with SANS 60079-17 or IEC 60079-17.
- Any incorrectly fitted, damaged or modified parts will invalidate the type of protection.

### 7 ACCESSORIES

<p><b>BOX LID</b> Standard (Black) or Polycarbonate (clear) with Gasket</p>	<p><b>STAINLESS STEEL MOUNTING SCREWS</b></p>	<p><b>UNIQUE CLIP RETAINED BLANKING PLUG</b></p> <p>Blanking Plug with removable Retaining Clip which locks the plug into position.</p> <p><b>REPLACEMENT LID SCREWS</b></p>	<p><b>RAILS FOR KWIKBLOKS</b></p> <p>N35 Rail</p> <p>PratleyCranked Rail</p>
---	---	--	--